

## ENGINEERED FOR LONGER LIFE AND EXCEPTIONAL PERFORMANCE

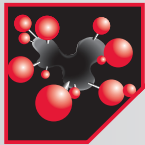
The 101ZL Spec-2™ represents our next generation long-haul steer tire. It features an advanced tread compound, improved casing design and even better retreadability, helping to make it one of the most durable long-haul tires on the market.

### LASTING PERFORMANCE FLEETS RELY ON



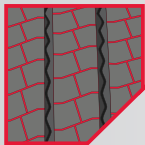
#### Wide Belt Package

Delivers a more uniform footprint for long, even wear and greater retreadability.



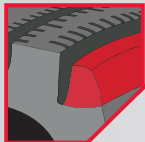
#### High-Elongation Tread Compound

Is specifically designed to create a tread that is much more resilient and less susceptible to irregular wear, helping to extend treadlife and provide exceptional durability.



#### Contact Pressure Equalizer Sipes

Optimize rib contact pressure to combat uneven wear and improve wet handling / braking.



#### Stress Equalizer Ribs

Ensure even contact pressure along the shoulders to combat step down wear.

### MAXIMUM DURABILITY FOR UNMATCHED RELIABILITY



#### Highly Reinforced Bead

Constructed with increased bead filler gauge and a longer steel chafer. This bead package is stronger, more durable and allows for less heat buildup in the bead area, ensuring maximum retreadability.

### SmartWay® Verified

Our 101ZL Spec-2 is one of many Yokohama tires designed to meet SmartWay's stringent low rolling resistance criteria.



Backed by a 7-year unlimited retread casing warranty.



### SIZES AND SPECIFICATIONS

TIRE SIZE	PART NUMBER	LOAD RANGE (P.R.)	TIRE WEIGHT (LBS)	RIM SIZE (INCH)		INFLATED DIMENSIONS		TREAD DEPTH (1/32")	LOADED DIMENSIONS		RPM	MAX LOAD CAPACITY AT COLD INFLATION PRESSURE		MAX SPEED (MPH)
				MEASURE	ALT	OVERALL WIDTH (INCH)	OVERALL DIAMETER (INCH)		OVERALL WIDTH (INCH)	STATIC RADIUS (INCH)		LB/PSI SINGLE	LB/PSI DUAL	
295/75R22.5	120171121	16H	119.0	9.00	8.25	11.5	40.0	18	12.5	18.7	522	7160@120	6610@120	75
11R22.5	120171122	16H	120.2	8.25	7.50	11.0	41.3	18	12.1	19.3	505	6610@120	6005@120	75
285/75R24.5	120171128	14G	122.4	8.25	7.50 - 9.00	11.1	41.3	18	12.1	19.3	505	6175@110	5675@110	75
11R24.5	120171124	16H	128.1	8.25	7.50	11.1	43.3	18	12.3	20.2	481	7160@120	6610@120	75

Yokohama tires are subject to an ongoing development process. Yokohama Tire Corporation reserves the right to change product specifications at any time without notice or obligation. Not all models and sizes available in all locations.

### THE YOKOHAMA DIFFERENCE

When you do business with us, you get more than just a world-class tire engineered by some of the industry's best. You also get a partner committed to delivering efficient products and solutions to help your business run more smoothly and profitably. Our industry-leading support network truly makes Yokohama the SmartSolution.



#### SMARTSOLUTION®

Our innovative business philosophy, SmartSolution®, is our commitment to meeting the most essential demands of today's fleets: Longevity, Efficiency, Availability and Dependability.



#### SMARTSOLUTION® CERTIFIED NETWORK

Each of the certified dealers that make up our expansive nationwide SmartSolution Certified Network is selected to ensure they're ready to provide the solutions you need, fast.



#### YOKOHAMA EMERGENCY SERVICE (YES)

We offer nationwide emergency service, focused on keeping your cargo on the move—24/7/365.



#### YOKOHAMA IS A SMARTWAY® TRANSPORT PARTNER

Working with the SmartWay program, we're committed to accelerating the availability, adoption, and market penetration of advanced fuel-efficient technologies and operational practices—saving you fuel, lowering costs, and reducing adverse impact on the environment.

**Yokohama Tire Corporation** | 800.423.4544 | yokohamatruck.com

Commercial Customer Service: ext. 2, opt. 2

Credit Department: ext. 3977

Consumer Affairs: 800.722.9888

Commercial Customer Service Dealer Order Fax: 800.455.9656